



## SEWER OVERFLOW AND STORMWATER REUSE MUNICIPAL GRANT (OSG) PROGRAM CATEGORICAL EXCLUSION

TO: All Interested Citizens, Government Agencies and Public Groups

In accordance with the Nebraska Clean Water State Revolving Fund (CWSRF) and Sewer Overflow and Stormwater Reuse Municipal Grants Program (this is referred to as the Overflow and Stormwater Grant program or OSG program) environmental review process, which is based on the National Environmental Policy Act, an environmental review has been performed on the proposed agency action below:

This information reviews the environmental impact likely from a project. This project is planned to be federally funded wholly or in part through your tax dollars; therefore, you are entitled to take part in its review. If you have concerns about the environmental impact of this project, please provide them with this time. The Nebraska Department of Water, Energy and Environment (NDWEE) encourages public input in this decision-making process.

PROJECT NAME: Sanitary Sewer CIPP Lining  
APPLICANT: Ashton, Nebraska  
COUNTY: Sherman  
POPULATION: 198 (2020 census)  
NDWEE REFERENCE NUMBER: 2024-145269375  
OSG GRANT NUMBER: OSG.2023.002  
OSG GRANT AMOUNT: \$299,500

The Village of Ashton is seeking funding to assess, correct, and improve our current wastewater system. The community has a history of high water table and infiltrating sanitary sewer lines causing a controlled bypass of their complete retention lagoons to prevent sewer overflow during rain events. Ashton will assess sewer lines for infiltration and inflow (I&I) problems and install slip-lining, cured in place pipe lining (CIPP) in portions of damaged sections, correcting I&I within the collection system

The Village of Ashton was awarded financial assistance through the CWSRF loan program for the collection system improvements. The collection system relining project is categorically eligible for OSG funding. An OSG grant in the amount of \$299,500 is proposed to for the Village of Ashton. Green Project Reserve Requirement - The Village of Ashton agrees that at least \$299,500 of Project Costs will be used for work categorized as Green Project Reserve as determined by the EPA including: 1) green infrastructure, 2) water efficiency improvements, 3) energy efficiency improvements, or 4) other environmentally innovative activities.

The proposed project was reviewed for eligibility for a categorical exclusion from National Environmental Policy Act review specified in 40 CFR (Code of Federal Regulations) Part 6.204. The project meets all criteria described in the following references and environment assessment questionnaire. The Department has determined that this project is eligible for a categorical exclusion. Consequently, a preliminary decision has been made that a Finding of No Significant Impact will not be prepared. Justification for categorical exclusion includes:

- The proposed action is not known or expected to have potentially significant environmental impacts on the quality of the human environment either individually or cumulatively over time;
- The proposed action is not known or expected to significantly affect state or federally listed threatened or endangered species or their critical habitat;
- The proposed action is not known or expected to significantly affect national natural landmarks or any property with nationally significant historic, architectural, prehistoric archeological or cultural value, including but not limited to, properties listed on or eligible for the National Register of Historic Places;
- The proposed action is not known or expected to significantly affect environmentally important natural resource areas like wetlands, prime farmland, wild and scenic rivers, and significant fish or wildlife habitat;

- Based on a review of the available mapping, the slip lining does not lie within the 100-year floodplain.
- The proposed action is not known or expected to have a significant effect on the pattern and type of land use (industrial, commercial, agricultural, recreational, residential) or growth and distribution of population including altering the character of existing residential areas, or may not be consistent with state or local government, or federally-recognized Indian tribe approved land use plans or federal land management plans;
- Based on review there are no new/relocated surface or groundwater discharges; the project is not being developed to provide capacity to service a population greater than 30% of that existing for the community; and it is supported by a State growth strategy. In addition, there will not be a substantial increase in volume/loading of pollutants to receiving streams; and
- The proposed action is not known or expected to cause significant public controversy.

This project supports EPA’s Strategic Plan to Protect and Restore Waterbodies and Watersheds by following these inputs and outcomes:

- **Inputs:**
- Increase in funding to rural and financially distressed areas and to low-population areas;
- Increase in adoption of green infrastructure, water and energy efficiency improvements, and other environmentally innovative activities; and
- Increase in investment for Infiltration/Inflow correction to rural communities with complete retention lagoons as their wastewater treatment works.
- **Outcomes:**
- Increased compliance for municipalities regarding reduced violations for uncontrolled discharges from complete retention lagoon systems.

The review did not indicate a significant environmental impact will result from the proposed action. Based on analyses completed by the consulting engineer, different federal, state & local agencies, no adverse impacts are anticipated to wetlands, the floodplain, prime farmland or historical resources. The project was planned to ensure that no segment of the community’s population is impacted disproportionately from related effects. Consequently, a preliminary decision has been made that an Environmental Impact Statement (EIS) will not be prepared.

This action is taken based on a careful review of the engineering reports and other supporting data that are on file with NDWEE. All are available for public review upon request. A copy of the environmental assessment is attached. Persons having a comment on this determination are encouraged to submit such comments to the NDWEE State Revolving Fund Program at [dwee.srf@nebraska.gov](mailto:dwee.srf@nebraska.gov), or by phone at (402) 471-4200.

Signed this 14<sup>th</sup> day of April, 2026.

Sincerely,

Sarah Starostka  
Division Administrator  
Planning & Aid Division

Attachments:    Distribution List  
                          Site Map  
                          Environmental Assessment Questionnaire

CATEGORICAL EXCLUSION DISTRIBUTION LIST  
ASHTON, NEBRASKA

DEPARTMENT OF WATER, ENERGY &  
ENVIRONMENT

[ndwee.nepa-review@nebraska.gov](mailto:ndwee.nepa-review@nebraska.gov)

245 Fallbrook Blvd, Suite 100  
Lincoln, NE 68521

NEBRASKA GAME & PARKS COMMISSION

Melissa Marinovich, Environmental Review

[ngpc.envreview@Nebraska.gov](mailto:ngpc.envreview@Nebraska.gov)

P.O. Box 30370  
Lincoln, NE 68503-0370

NEBRASKA STATE HISTORICAL SOCIETY

[hn.hp@nebraska.gov](mailto:hn.hp@nebraska.gov)

P.O. Box 82554  
Lincoln, NE 68508-2554

STATE OFFICE OF POLICY RESEARCH

Cicely Wardyn, Policy Advisor

[cicely.wardyn@nebraska.gov](mailto:cicely.wardyn@nebraska.gov)

Rm 1319, State Capitol  
P.O. Box 94601  
Lincoln, NE 68509-4601

DEPARTMENT OF ECONOMIC DEVELOPMENT

Tom Stephens, Financial Packager

[tom.stephens@nebraska.gov](mailto:tom.stephens@nebraska.gov)

245 Fallbrook Blvd. Suite 002  
Lincoln, NE 68521

DEPARTMENT OF THE INTERIOR

FISH AND WILDLIFE SERVICE

Janae Johnson

[nebraskaES@fws.gov](mailto:nebraskaES@fws.gov)

9325 South Alda Road  
Wood River, NE 68883

NATIONAL PARK SERVICE

Christine Gabriel, Environmental Coordinator/Midwest

[mwro\\_compliance@nps.gov](mailto:mwro_compliance@nps.gov)

601 Riverfront Drive  
Omaha, NE 68102-4226

USDA RURAL DEVELOPMENT

Kelley Messenger

[kelley.messenger@usda.gov](mailto:kelley.messenger@usda.gov)

Room 308, Federal Building  
100 Centennial Mall North  
Lincoln, NE 68508

ENVIRONMENTAL PROTECTION AGENCY

Emily Nusz

[nusz.emily@epa.gov](mailto:nusz.emily@epa.gov)

11201 Renner Blvd  
Mail Code: WWPDWIMB  
Lenexa, KS 66219

STATE CONSERVATIONIST

Robert Lawson, Natural Resources Conservation Svc.

[robert.lawson@usda.gov](mailto:robert.lawson@usda.gov)

Federal Building, Room 152  
100 Centennial Mall North  
Lincoln, NE 68508-3866

DEPARTMENT OF THE ARMY

Jeremy Grauf, State Program Manager

US Army corps of Engineers

[Jeremy.grauf@usace.army.mil](mailto:Jeremy.grauf@usace.army.mil)

Nebraska State Office, Suite 1  
8901 South 154<sup>th</sup> Street  
Omaha, NE 68138-3621

APPLICANT: VILLAGE OF ASHTON

Craig Kamler, Clerk & Utility Superintendent

[ashtonvillage@nctc.net](mailto:ashtonvillage@nctc.net)

320 Center Ave  
Ashton, NE 68817

CONSULTING ENGINEER:

Chris Miller PE

[cmiller@miller-engineers.com](mailto:cmiller@miller-engineers.com)

Miller and Associates, Consulting Engineers

1111 Central Avenue

Kearney, NE 68847

LOCAL NEWSPAPER:

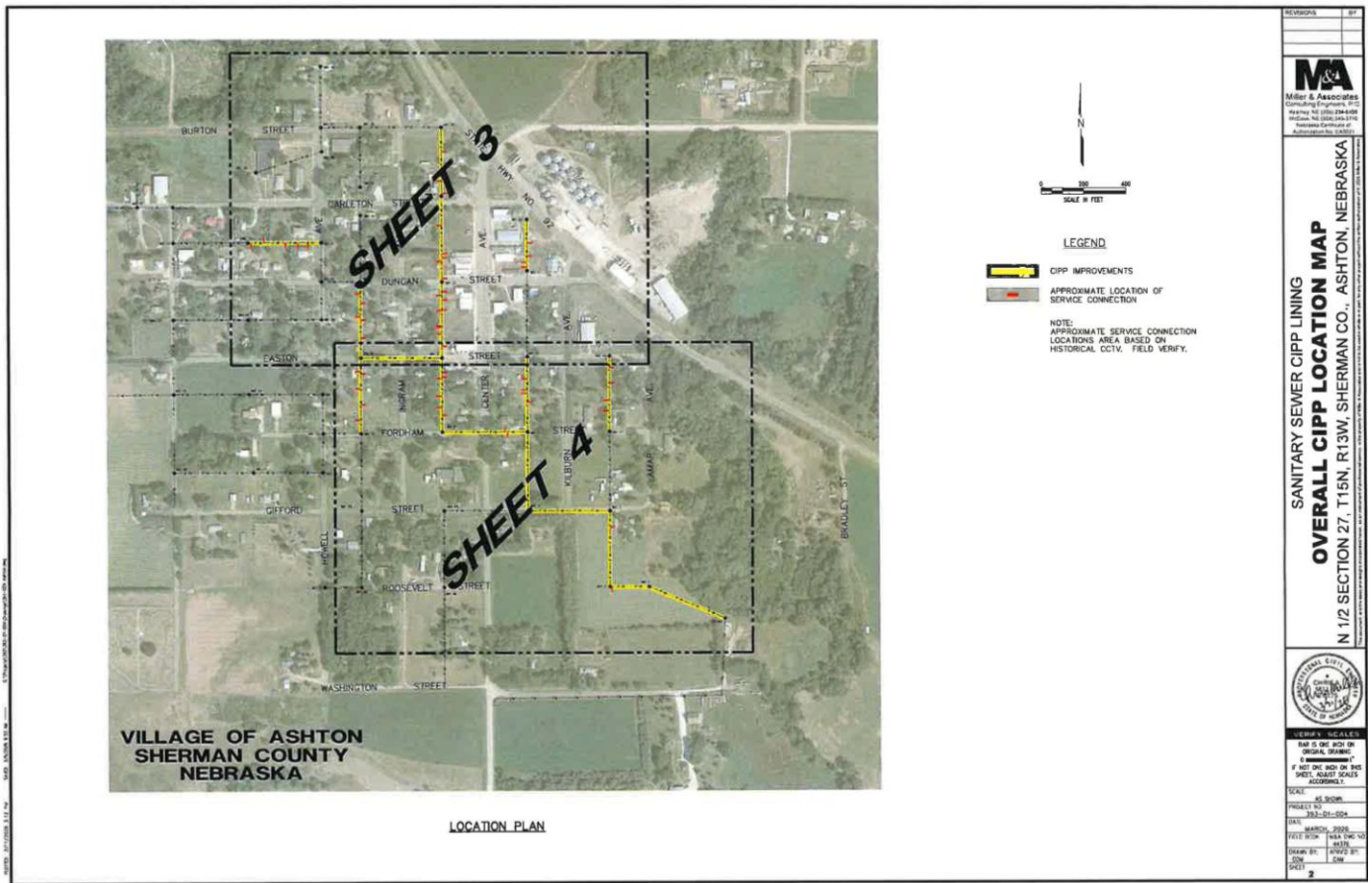
Sherman County Times

822 O Street

Loup City, NE 68853

*(Public Information Only not for Public Notice)*

## Site Map of Sewer Collection System and CIPP Relining



### Environmental Questionnaire for OSG Grants

## **ENVIRONMENTAL ASSESSMENT QUESTIONNAIRE**

1. Project Title: Sanitary Sewer Collection System Improvements.
2. Applicant: Village of Ashton, Nebraska.
3. Project Description: The Village of Ashton, Nebraska is planning to improve its collection system. The project will include addressing infiltration issues in the collection system through actions that include evaluation of the sanitary sewer collection system by CCTV, repair, and CIPP liner.
4. Project Location: Collection system project locates within the Ashton limit. See attached map.
5. Describe any environmental permits needed for the project (e.g., federal, state, local) and the status of any permit: A Title 123 construction permit was issued by NDWEE on March 17, 2026.

**A. LAND USE:**

1. Conversion of Prime Farmland, Unique Farmland, or Farmland of Statewide Importance (Farmland), to non-agricultural use as defined under the Farmland Protection Act 7 U.S.C. 4201 et seq.

**No Impact**

2. Conflicts with any applicable land use plan, policy, act, or regulation of an agency with jurisdiction over the project (including, but not limited to the general plan, habitat conservation plan, specific plan, local plan, or zoning ordinance).

**No Impact**

**B. AIR QUALITY:**

1. Conflicts with or delays in implementation of any applicable federal, state, or local air quality plan.

**No Impact**

2. Violations of any air quality standard or contributions to an existing or projected air quality violation (including protected areas designated as mandatory Federal "Class I")

**No Impact**

3. Increases in any criteria pollutant for which the project region is in non-attainment under an applicable federal or state ambient air quality standard (including releasing emissions which exceed quantitative thresholds for ozone precursors)

**No Impact**

4. Releases of objectionable odors such as hydrogen sulfide.

**No Impact**

Please provide mitigation measures related to air quality, including those that reduce a significant impact to less than significant. Please provide references and supporting documents.

**There are no conflicts with federal, state, or local air quality plans. Also, there are no anticipated air quality issues from the proposed project. There may be temporary dust and vehicle emissions associated with construction. Dust from construction is minimized using BMPs. Construction conditions are controlled by the contract conditions established by the project engineer.**

**C. NOISE AND VIBRATION**

1. Generation of noise levels more than standards established in the local general plan or noise ordinance, or applicable standards of other agencies.

**No Impact**

2. Permanent increases in ambient noise levels in the project vicinity above levels existing without the project.

**No Impact**

3. Temporary or periodic increases in ambient noise levels in the project vicinity above levels existing without the project.

**No impact**

4. Generation of vibration that could increase the risk of structural damage.

**No Impact**

Please provide mitigation measures related to noise and vibration, including those that reduce a significant impact to less than significant. Please provide references and supporting documents.

**During project construction there is noise typical of construction. Construction noise does not conflict with any Village of Ashton ordinances. Construction conditions are controlled by the contract conditions established by the project engineer.**

**D. GEOLOGY AND SOILS:**

1. Exposure of people or structures to hazards from unstable soils, landslide, lateral spreading, subsidence, liquefaction, or collapse.

**No Impact**

2. Increase in soil erosion or loss of topsoil.

**No impact**

3. Loss of economic viable mineral deposits, scientifically significant paleontological resources, or unique geologic features.

**No Impact**

Please provide mitigation measures related to geology and soils, including those that reduce a significant impact to less than significant. Please provide references and supporting documents.

**Erosion during construction is minimized by the stormwater management plan created by the project engineer. Construction conditions and Stormwater BMPs are controlled by the contract conditions established by the project engineer.**

**E. WATER RESOURCES:**

1. Violations of any water quality standards or waste discharge requirements, including degradation of water quality.

**No Impact**

2. Depletion or contamination of groundwater supplies (including sole-source aquifers) or negatively interfere with groundwater recharge.

**No Impact**

3. Alteration to the drainage pattern of a water resource that would result in an increase in erosion or flooding on- or off-site.

**No Impact**

4. Soil erosion or stormwater runoff that increases sediment, pollutants, or contaminates into streams, rivers, or other water resources.

**No Impact**

5. Floodplain modification, development within, or redirection, as defined by executive order 11988.

**No Impact.**

6. Increase in flood risk affecting loss on human safety, health, and welfare.

**No Impact**

7. Loss, degradation or destruction of wetlands and waterbodies through direct removal, filling, hydrological interruption, or other means.

**No Impact**

8. Alteration of wild and scenic rivers as defined by the Wild and Scenic Rivers Act 16 U.S.C. 1271 et seq.

**No Impact**

9. Conflicts with the Rivers and Harbors Act, 33 U.S.C. 403.

**No Impact**

10. Conflicts with the Coastal Barrier Resources Act, 16 U.S.C. 3501 et seq.

**No Impact**

11. Conflicts with the Coastal Zone Management Act, 16 U.S.C. 1451 et seq.

**No Impact**

Please provide mitigation measures related to water resources, including those that reduce a significant impact to less than significant. Please provide references and supporting documents.

**No part of the proposal has potential to violate water quality standards, or negatively impact water quality, or waste discharge requirements. Groundwater quality, quantity, and recharge is not negatively impacted by the proposed improvements. Short-term hazards that may arise from construction are managed by the contract conditions established by the project engineer.**

## **F. BIOLOGICAL RESOURCES**

1. Jeopardizing the continued existence of any threatened or endangered species identified in local or regional plans, policies, or regulations, or by the U.S. Fish and Wildlife Service or National Marines Fisheries Service.

**No Impact.**

2. Modification, fragmentation, or degradation of critical habitat identified in local or regional plans, policies, or regulations, or by the U.S. Fish and Wildlife Service or National Marines Fisheries Service.

**No Impact**

3. Harm to fauna, including mammals, birds, reptiles, amphibians, fish, and invertebrates.

**No Impact**

4. Changes in vegetation type (native to the region), particularly if the vegetation type in the region is already highly fragmented because of human activity.

**No Impact**

5. Modification, fragmentation, or degradation of biological sensitive areas other than those mentioned above.

**No Impact**

6. Disturbances to marine mammals protected by the Marine Mammal Protection Act as defined under 16 U.S.C. 1361-1407.

**No Impact**

7. Disturbances to Bald or Golden Eagles as defined under 16 U.S.C. 668 et seq.

**No Impact**

8. Disturbances to migratory birds as defined under 16 U.S.C. 703-712 as amended.

**No Impact**

9. Conflicts with the provisions of an adopted Habitat Conservation Plan, Natural Community Conservation Plan, or other approved local, regional, state, or federal habitat conservation plan.

**No Impact**

10. Introduction or spread of invasive species as identified under Executive Order 13112.

**No Impact**

Please provide mitigation measures related to biological resources, including those that reduce a significant impact to less than significant. Please provide references and supporting documents.

**There is no fauna, marine mammals, Bald or Golden eagles or their nests or eggs, or migratory birds at the proposed CIPP sites.**

**G. CULTURAL RESOURCES:**

1. Changes to historical resources, including archaeological and cultural resources as defined in 36 CFR part 800.

**No Impact**

2. Modification of unique paleontological resources or site or unique geologic features.

**No Impact**

3. Disturbance of human remains, including those interred outside of formal cemeteries.

**No Impact**

Please provide mitigation measures related to cultural resources, including those that reduce a significant impact to less than significant. Please provide references and supporting documents.

**There are no known changes to historical, archaeological, or cultural resources as defined in 36 CFR 800. The proposed project will be entirely on developed land of street right of way and has no impact on any National or State Historic Property and or property that meets the criteria under 36 CFR 800.**

#### **H. SOCIOECONOMIC AND ENVIRONMENTAL JUSTICE:**

1. Changes to the demographics around project location such as population growth.

**No Impact**

2. Modifications to economic factors such as per capita income, unemployment rate, or poverty.

**No Impact**

3. Alterations to social assets, such as housing or public services.

**No Impact**

4. Disproportionate high and adverse human health environmental effects on minority population and low-income population as defined under Executive Order 12989.

**No Impact**

#### **I. TRANSPORTATION AND TRAFFIC**

1. Changes to traffic patterns around the project area including, but not limited to, the arrival and departure of construction workers, vehicles hauling equipment and materials to the site, road closures, detours, and slower movement and large turning radii of trucks going to the project site.

**Less than Significant Impact, Contractor responsible for traffic control. One lane of traffic to be maintained with access to homes and businesses at all times during construction.**

Please provide mitigation measures related to transportation and traffic, including those that reduce a significant impact to less than significant. Please provide references and supporting documents.

**Outside of the temporary disruption to local traffic typical of construction projects, there were no anticipated changes to long-term traffic or transportation patterns in the area. Any necessary traffic controls were stipulated by the contract conditions established by the project engineer.**

#### **J. UTILITIES AND COMMUNITY SERVICES**

1. Changes to electric, cable, gas, sewer, water, stormwater, and other existing services.

**The changes include addressing infiltration issues in the collection system through actions that included CCTV evaluation, repair, and liner installation of cured in place pipe lining (CIPP).**

2. Changes to community services, such as open space, recreational and cultural facilities.

**No Impact**

3. Please provide mitigation measures related to Utilities and Community Services, including those that reduce a significant impact to less than significant. Please provide references and supporting documents

**Construction conditions – such as how and where to tie into existing manhole infrastructure to minimize disruption – are controlled by the contract conditions established by the project engineer.**

**K. HAZARDOUS AND TOXIC MATERIALS AND WASTE:**

1. Accidental releases, spills, or improper storage and disposal of hazardous materials.

**No Impact**

2. Conflicts with Comprehensive Environmental Response, Compensation, and Liability Act (CERCLA), Resource Conservation and Recovery Act (RCRA), Solid Waste Disposal Act, Toxic Substances Control Act, and Emergency Planning and Community Right-to-Know Act.

**No Impact**

3. Generation or increase in the amount of sewage sludge that is not in compliance with EPA standards for the use or disposal of sewage sludge.

**No Impact**

Please provide mitigation measures related to Hazardous Materials and Toxic Waste, including those that reduce a significant impact to less than significant. Please provide references and supporting documents.

**Short-term hazards that may arise from construction, such as fuel release, are managed by the contract conditions established by the project engineer.**

**No CERCLA, RCRA, Solid Waste, Toxic Substance, or hazardous chemical sites exist within or near the project boundaries. Proposed improvements do not involve hazardous chemicals. The project does not generate sewage sludge.**

**L. HUMAN HEALTH AND SAFETY**

1. Creating occupational health hazards for workers during construction or operation.

**No Impact**

2. Creating or contributing to environmental health risks and safety risks that may disproportionately affect children.

**No Impact**

3. Creating or contributing to a public health risk of immediate injury or long-term health hazards.

**No Impact**

4. Please provide mitigation measures related to Human Health and Safety, including those that reduce a significant impact to less than significant. Please provide references and supporting documents.

Construction conditions – such as working conditions and safety standards – are controlled by the contract conditions established by the project engineer.


**M. CUMULATIVE IMPACTS**

Category	Impact Anticipated		
	No Impact	Less than Significant Impact	Potentially Significant Impact
1. Land Use	X	-	-
2. Air Quality	X	-	-
3. Noise and Vibration	X	-	-
4. Geology and Soils	X	-	-
5. Water Resources	X	-	-
6. Biological Resources	X	-	-
7. Cultural Resources	X	-	-
8. Socioeconomic and Environment	X	-	-
9. Transportation and Traffic	-	X	-
10. Utilities and Community Services	-	X	-
11. Hazardous and Toxic Materials and	X	-	-
12. Human Health and Safety	X	-	-

**Outcomes**

- The project addressed inflow and infiltration issue of Village’s sanitary sewer collection system.
- The project will improve the reliability and longevity of Village’s aged vitrified concrete pipe sanitary sewer collection system.

Sincerely,

X   
 Tom Fuenning  
 Professional Engineer

Thomas Fuenning  
 Professional Engineer  
 Nebraska Department of Water, Energy, & Environment